



Shawn McWilliams
Project Engineer, Regional Conveyance



Planned 2024 Construction Contracts

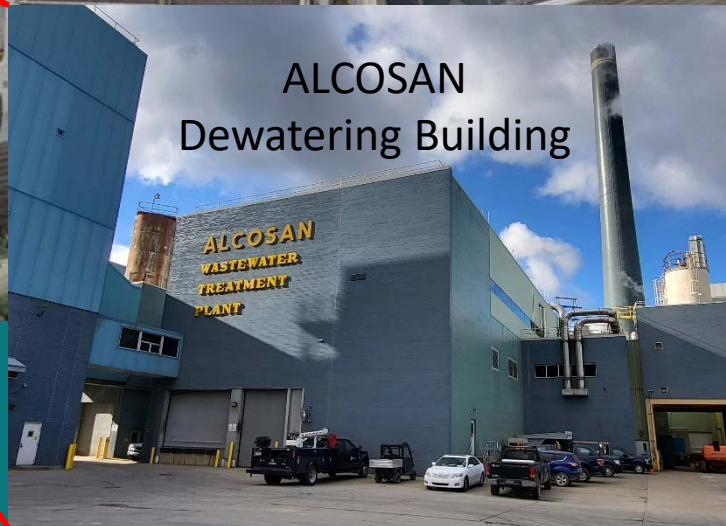


WWTP Plant Construction

Project	Est. Budget	Bid Timeframe
Contract 1799: Solids Thickening and Dewatering Improvements	\$38,000,000	Q2 2024



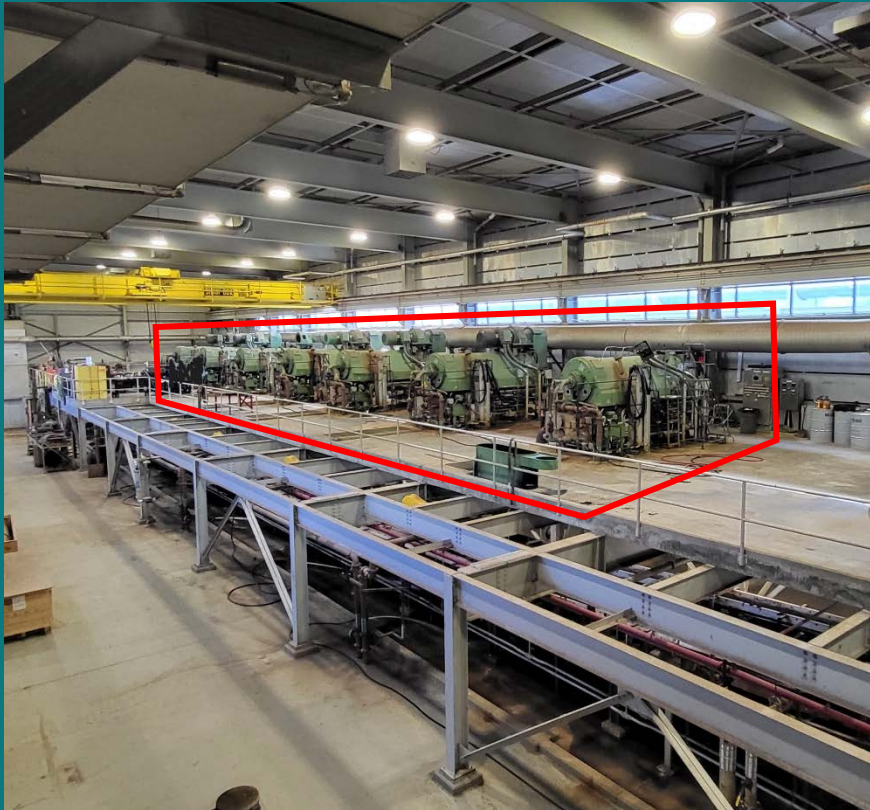
Solids Thickening and Dewatering Improvements



ALCOSAN
Dewatering Building



Solids Thickening and Dewatering Improvements



- Scope will include replacement of 7 existing Dewatering Centrifuges located on a mezzanine level within the Dewatering Building
- The new Dewatering Centrifuges are being pre-purchased by ALCOSAN due to long lead times



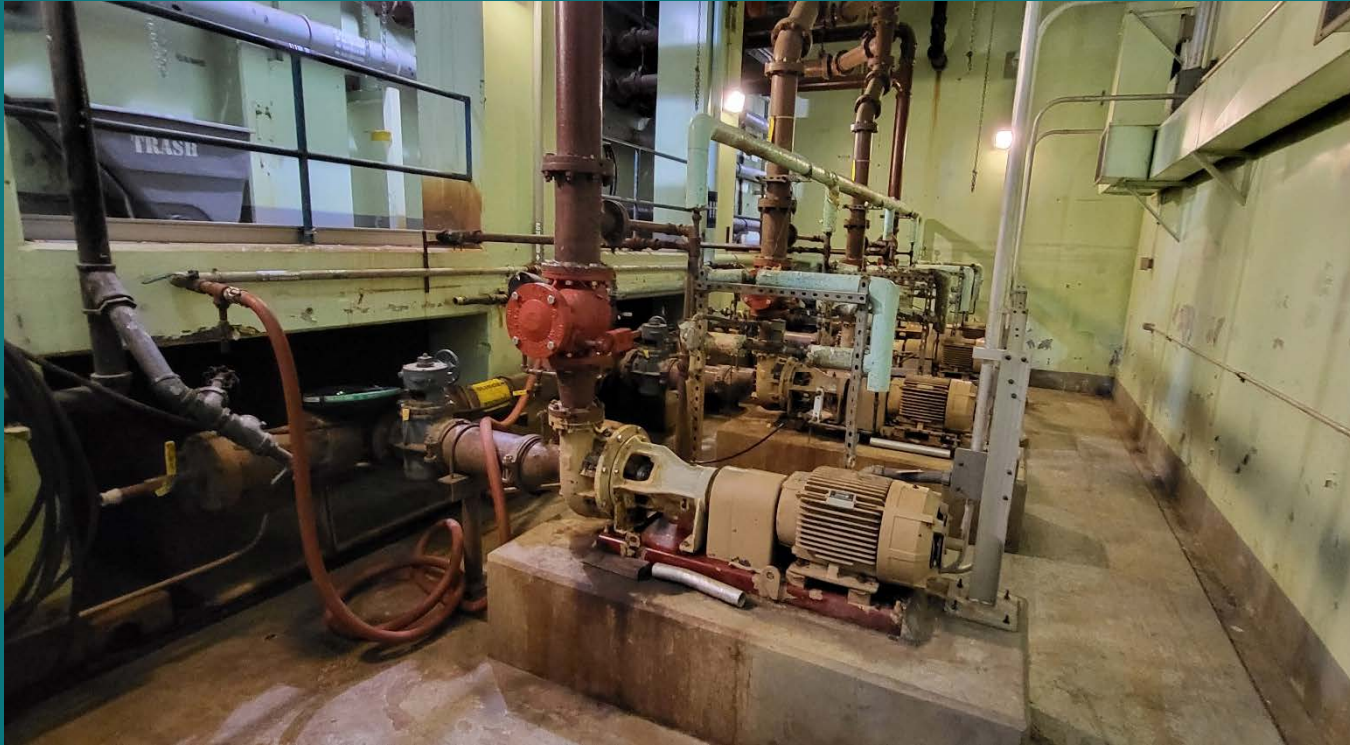
Solids Thickening and Dewatering Improvements



- Scope will include constructing an extension of the mezzanine level and furnishing up to 6 new Gravity Belt Thickeners atop the new mezzanine level extension
- Scope will include structural modifications to the Dewatering Building due to the additional loads from the new equipment



Solids Thickening and Dewatering Improvements



- Scope will also include replacement of ancillary items associated with the dewatering operation that are reaching the end of their useful life, including Primary Sludge Pumps (shown above) and Waste Activated Sludge (WAS) Pumps



Conveyance System Construction Projects

Project	Est. Budget	Bid Timeframe
Contract 1746: Melanchton Pump Station Replacement	\$1,800,000	Q1/2024
Contract 1794: Sewer Improvements Contract 2024	\$1,500,000	Q2/2024
Contract 1793: Site Demolition Contract #2 (ORT)	\$1,500,000	Q3/2024
Contract 1763: Access Shafts at A-40 and M-49	\$5,500,000	Q3-4/2024
Contract 1764: O-15/O-16 New Structure & Access Manhole	\$3,000,000	Q3-4/2024
Contract 1770: Various Improvements to the Ella and Corliss Pump Stations (adding O-07 Shaft Improvements)	\$5,000,000	Q4/2024



Conveyance System Construction and Projects

Project	Est. Budget	Bid Timeframe
Contract 1797: Ohio River Tunnel (ORT) Project	\$750,000,000	Q3-4/2024





Contract 1746: Melanchton Pump Station Replacement



- Demolish existing ejector station within fenced (red) area
- Create permanent fenced/gated entrance, requires clearing & grubbing , site work(yellow)
- Install new package submersible pump station, including controls and emergency generator w/ transfer switch and shelter
- NOTE: Work is within railroad zone of influence, requiring flagging and approved support of excavation
- Project Est. Budget: \$1,800,000



Contract 1794: Sewer Improvements Contract

- Planned site and structure improvements at eight different sites
- Contract will also be used to address emergency and undefined work
- Contingent item quantities are available for IDIQ work as needed
- Project Est. Budget: \$1,500,000



Contract 1793: Site Demolition

Contract #2

- Demolish existing buildings (YELLOW HASHED)
- Terminate existing utilities
- Clear areas containing shrub, tree and other materials (ORANGE AREA)
- Place concrete pads in preparation for new electrical transformers (RED)
 - Several locations not at the pictured site
- NOTE: Tall warehouse building is being maintained and not included in the work
- Project Est. Budget: \$1,500,000



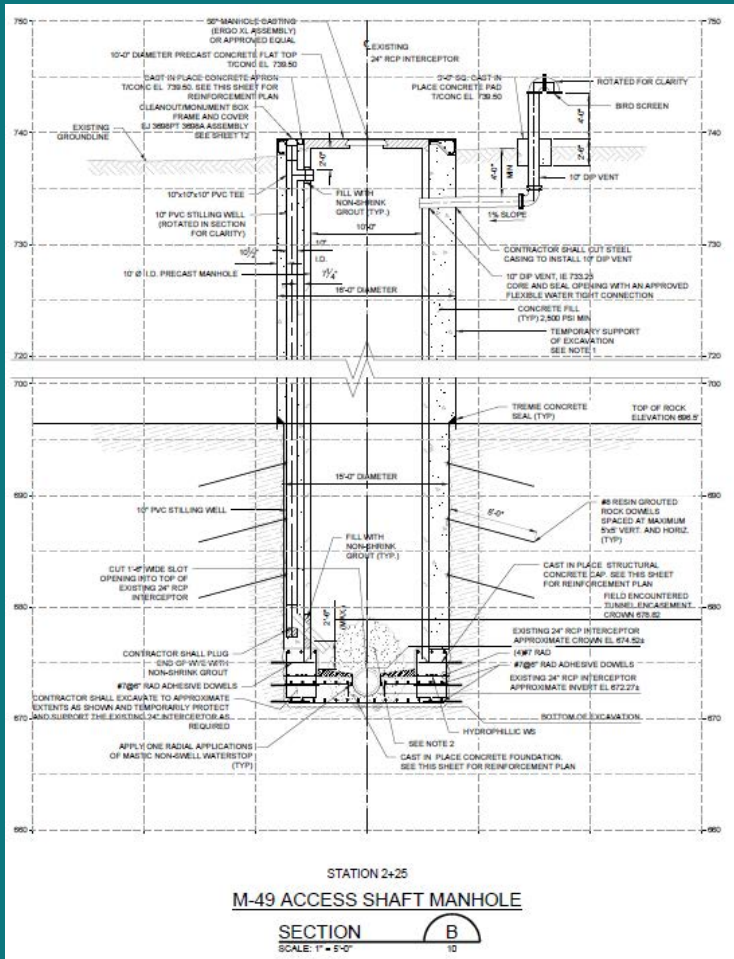
Contract 1793: Site Demolition Contract #2





Contract 1763: Access Shafts at A-40 & M-49

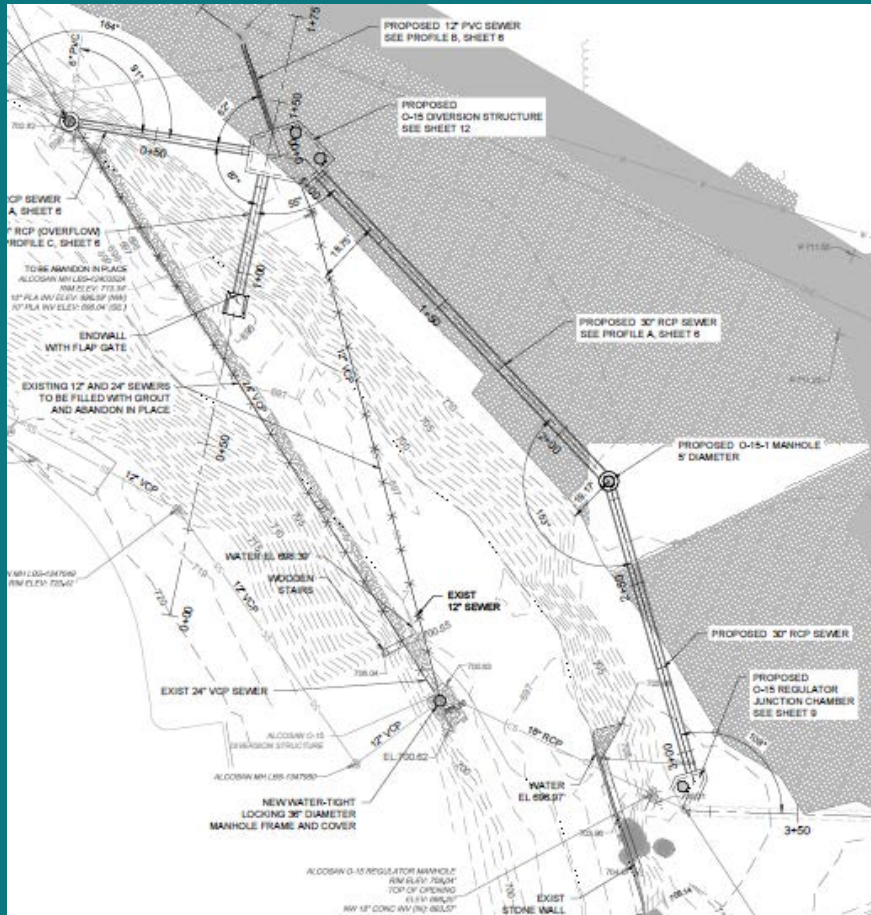
M-49



- Install new access shaft manhole onto existing deep tunnel interceptor
- 10-ft inside diameter finished precast concrete manhole
- Support of excavation will require measures both soil and rock
- Approximate excavation depth is 70-ft
- Doghouse construction shown at base over existing 24-in diameter sewer
- Project Est. Budget: \$5,500,000



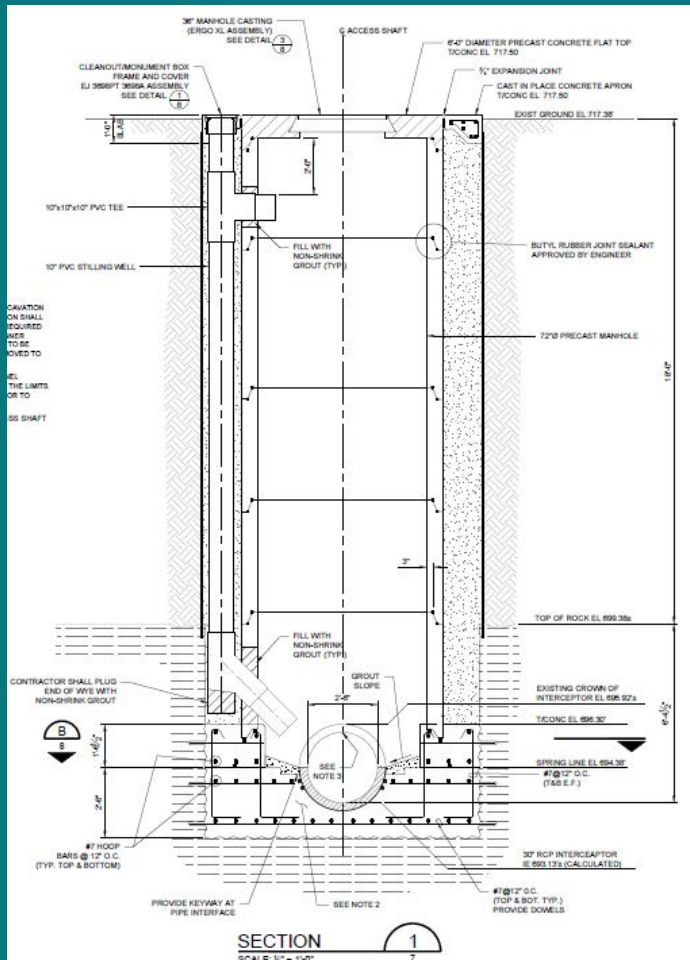
Contract 1764: O-15/O-16 New Structure & Access Manhole



- Replace and reroute existing 24" interceptor with 30" RCP
- Relocate diversion structure upstream and create new outfall
- Install new connection to existing regulator structure and modify structure for new flow patterns



Contract 1764: O-15/O-16 New Structure & Access Manhole



- Install new access shaft manhole onto existing deep tunnel interceptor
- 6-ft inside diameter finished precast concrete shaft manhole
- Support of excavation will require measures for both soil and rock
- Approximate excavation depth is 27-ft
- Doghouse construction shown at base over existing 30-in diameter sewer
- Project Est. Budget: \$3,000,000



Contract 1770: Various Improvements to Ella and Corliss Pump Stations *(adding O-07 Shaft Improvements)*



Ella Street Pump Station



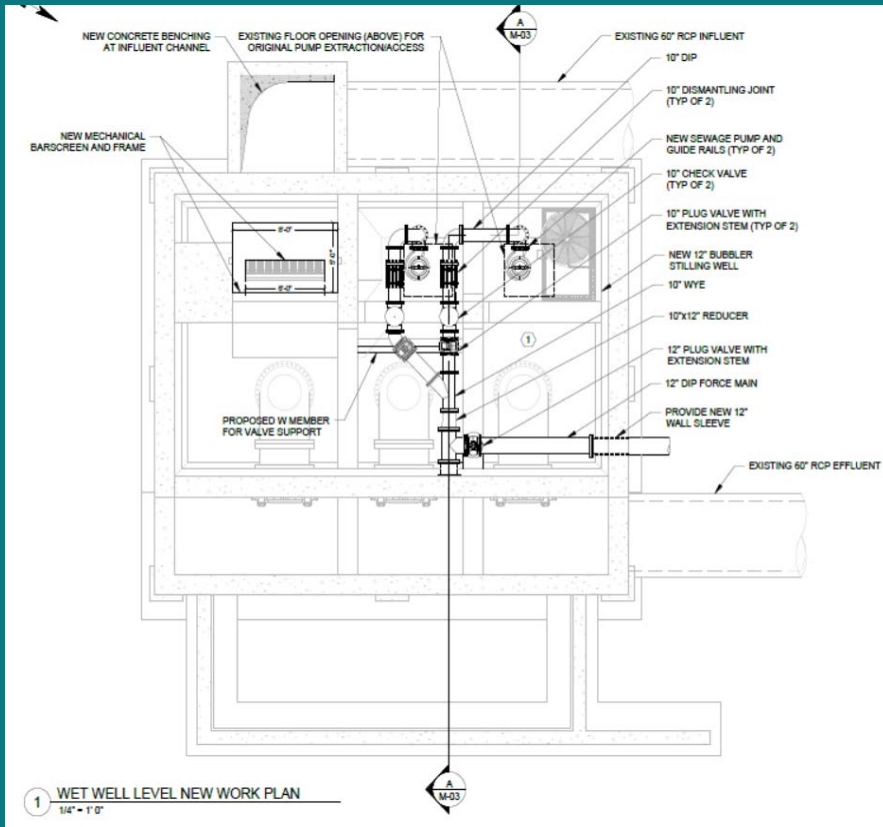
Corliss Pump Station*

*Barge-based work anticipated due to location along river and next to railroad tracks



Contract 1770: Various Improvements to Ella and Corliss Pump Stations *(adding O-07 Shaft Improvements)*

Ella Street Pump Station

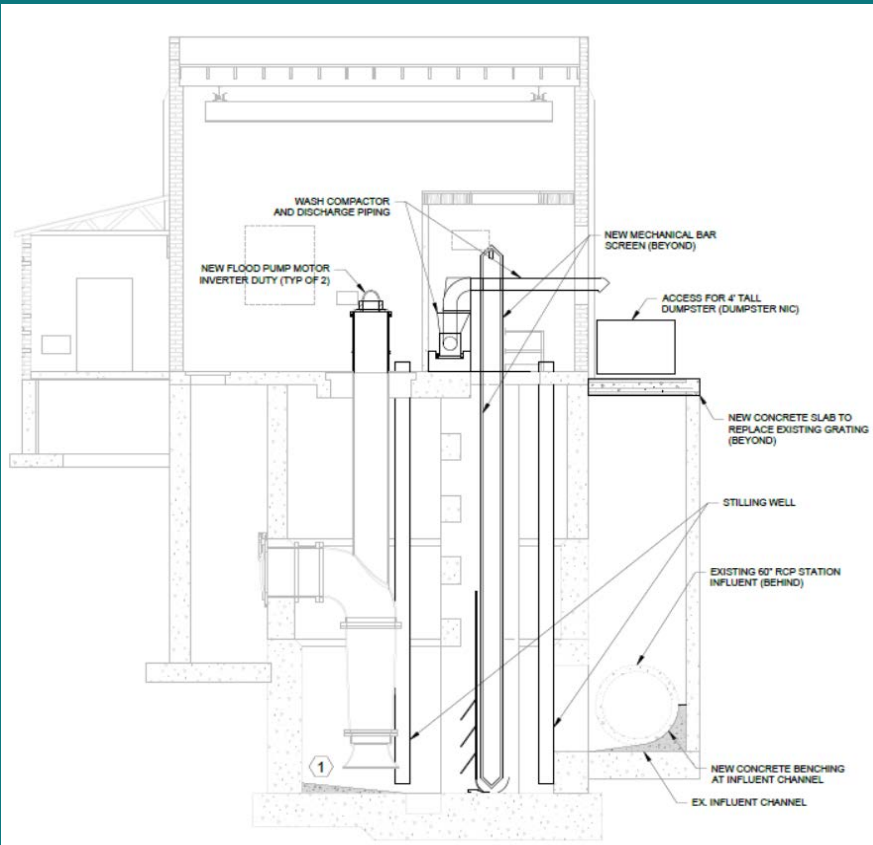


- Replacement of 10" submersible sewage pumps, internal piping and force main replacement to new manhole on property
- Installation of new meter pit with mag meter
- Replacement of approx. 225 LF of 18" gravity sewer and three manholes
- Replacement of bar screen system with added washer compactor



Contract 1770: Various Improvements to Ella and Corliss Pump Stations *(adding O-07 Shaft Improvements)*

Ella Street Pump Station

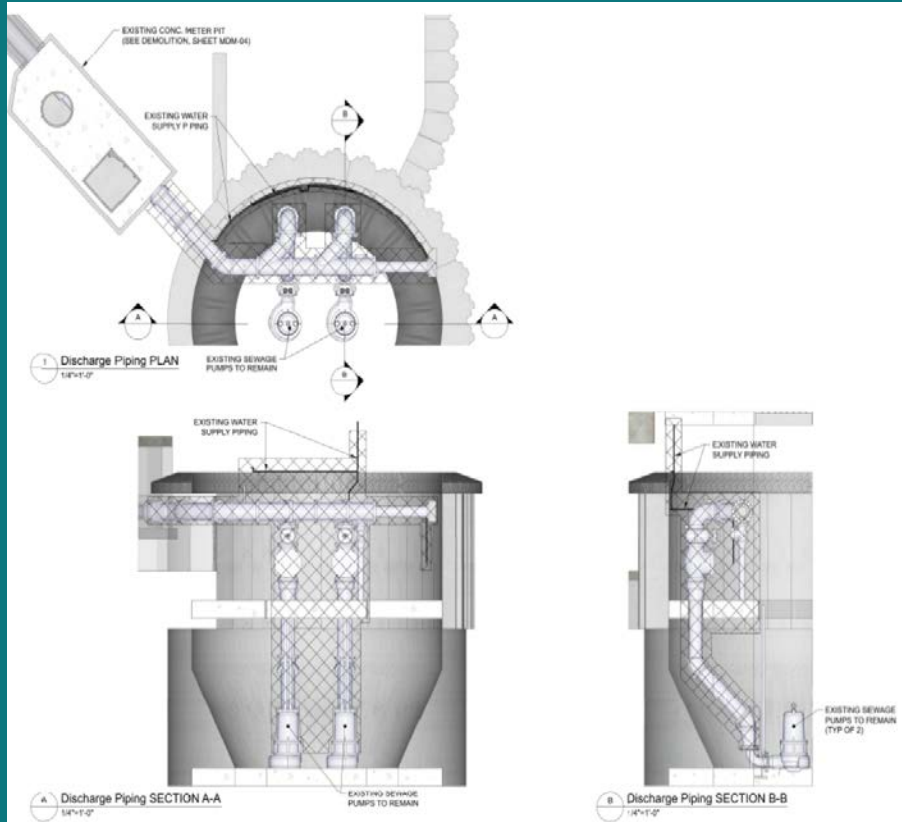


- Replacement of (3) motors for 42" storm pumps
- Addition of VFDs for sewage and storm pumps
- Relocation and replacement of level sensing equipment
- Work requires bypass pumping
- Replace overhead hoist and add motorized trolley functions

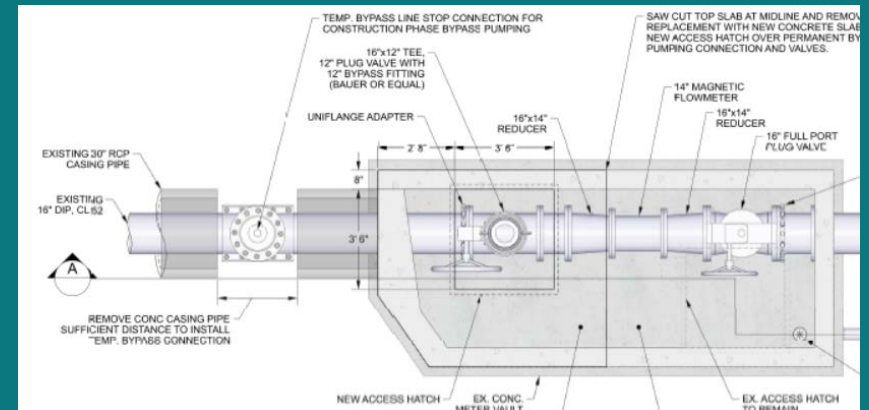


Contract 1770: Various Improvements to Ella and Corliss Pump Stations *(adding O-07 Shaft Improvements)*

Corliss Pump Station



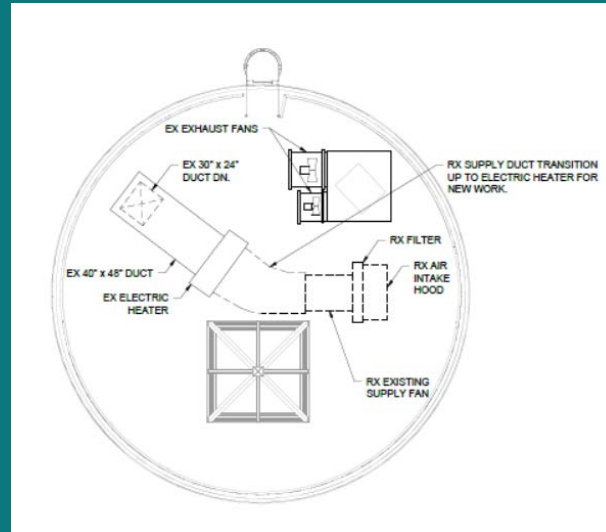
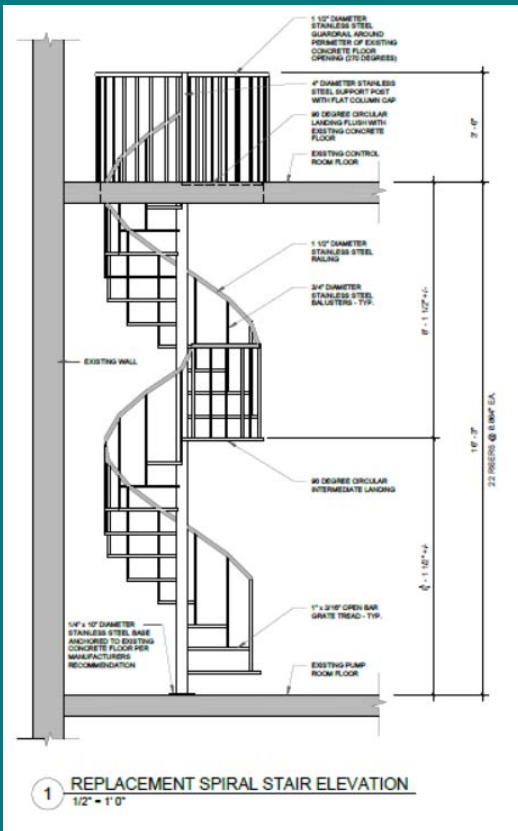
- Replacement internal discharge piping and external piping up to valve pit
- Replacement and reconfiguration of valve equipment and piping in valve pit
- Installation of a permanent bypass pumping connection to existing force main piping
- Work requires bypass pumping





Contract 1770: Various Improvements to Ella and Corliss Pump Stations *(adding O-07 Shaft Improvements)*

Corliss Pump Station

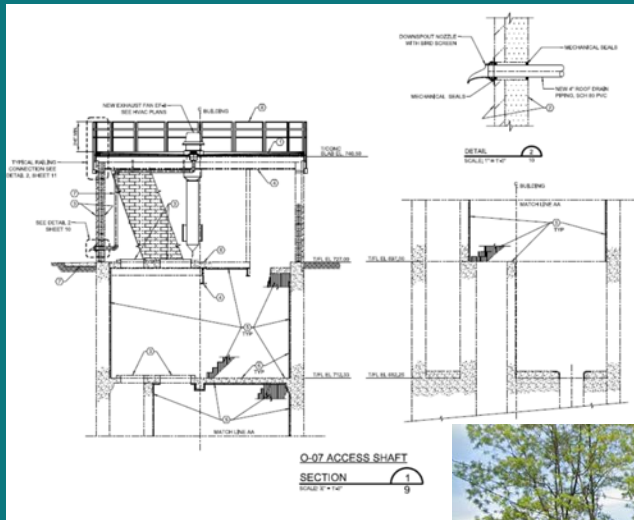


- Replacement of existing spiral staircase with stainless steel
- Replacement of all supply fan hardware
- Balancing of the HVAC system
- Replacement of roof, including the skylight
- Site access planned by barge due to location



Contract 1770: Various Improvements to Ella and Corliss Pump Stations *(adding O-07 Shaft Improvements)*

O-07 Access Shaft



- Roof replacement
- HVAC, lighting and safety improvements
- Balancing of the HVAC & odor system
- Interior concrete repairs
- Demolition of unused equipment
- Project Est. Budget: \$5,000,000



Ohio River Tunnel (ORT) Contract Scope

- Main Scope
 - TBM launch and retrieval shafts, access shafts and drop shafts
 - ORT main tunnel – 18 ft finished diameter, 19,990 ft long, 150 ft underground
 - Chartiers Creek Tunnel river crossing – 14 ft finished diameter, 4,420 ft long
 - Ella-Shingiss Connector Tunnel – 7 ft finished diameter, 1,850 long
 - Saw Mill Run Tunnel river crossing – 14 ft finished diameter, 1,600 ft long
 - Dewatering Tunnel to Wet Weather P.S. – 8 ft finished diameter, 555 ft long
 - 6 drop shafts and associated internal structures
 - Near surface facilities – regulators, conveyance sewers and outfalls
- Bid period to begin in late Q3-Q4
- Bid as one contract package; Project Est. Budget: \$750,000,000



Proposed Infrastructure Near Surface Facilities

Regulators



Courtesy of City of Fort Wayne, IN

**Consolidation
Sewers**



Courtesy of Portland Bureau of Environmental Services, OR

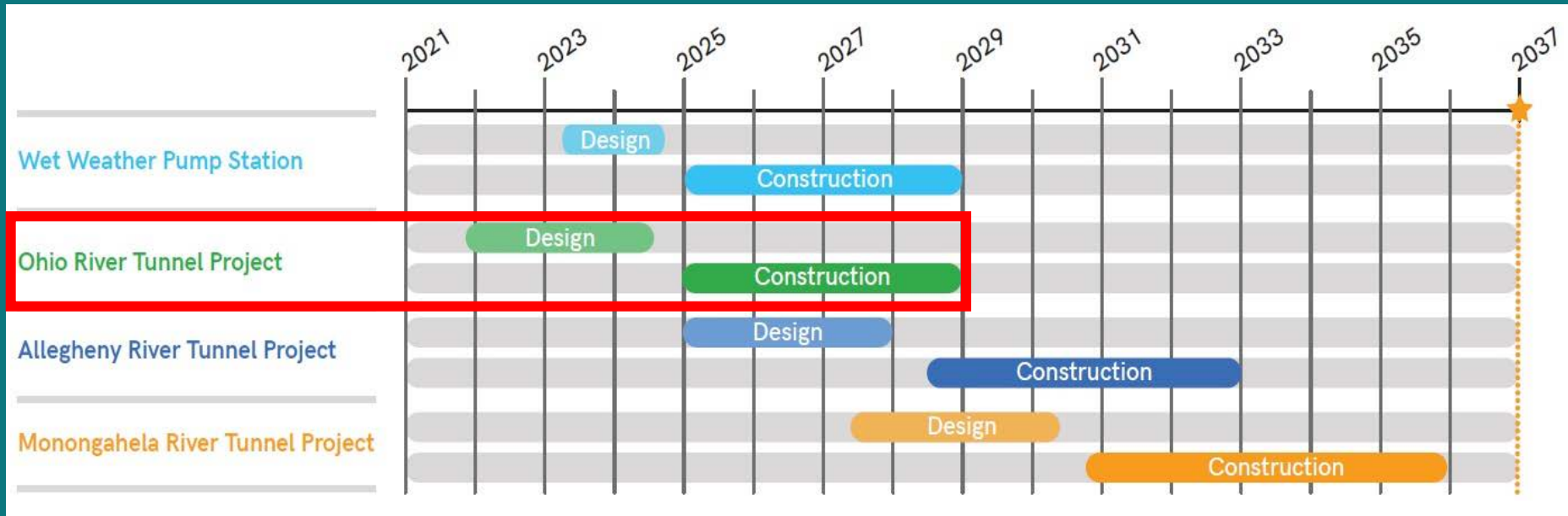
Shafts



Courtesy of Tideway Media and Press Center



Overall Implementation Schedule of 15 Years



Overall schedule driven by Modified Consent Decree schedule. Final completion by December 31, 2036, including commissioning. Interim deadlines drive the schedule for design and construction; **subject to change**.



Upcoming Contractor Outreach Event

- Follow-up Meeting to the August 2023 event
 - Last event participation included 300+ individuals
- Planning for Spring 2024 - *Date and Location TBD*
- Focus of the event will be
 - Project design updates since last event
 - Participation opportunities local contractors, small-business and m/w/dbe companies
 - Networking between prime contractors, subcontractors, consultants and vendors
- Information will be publicized as it develops

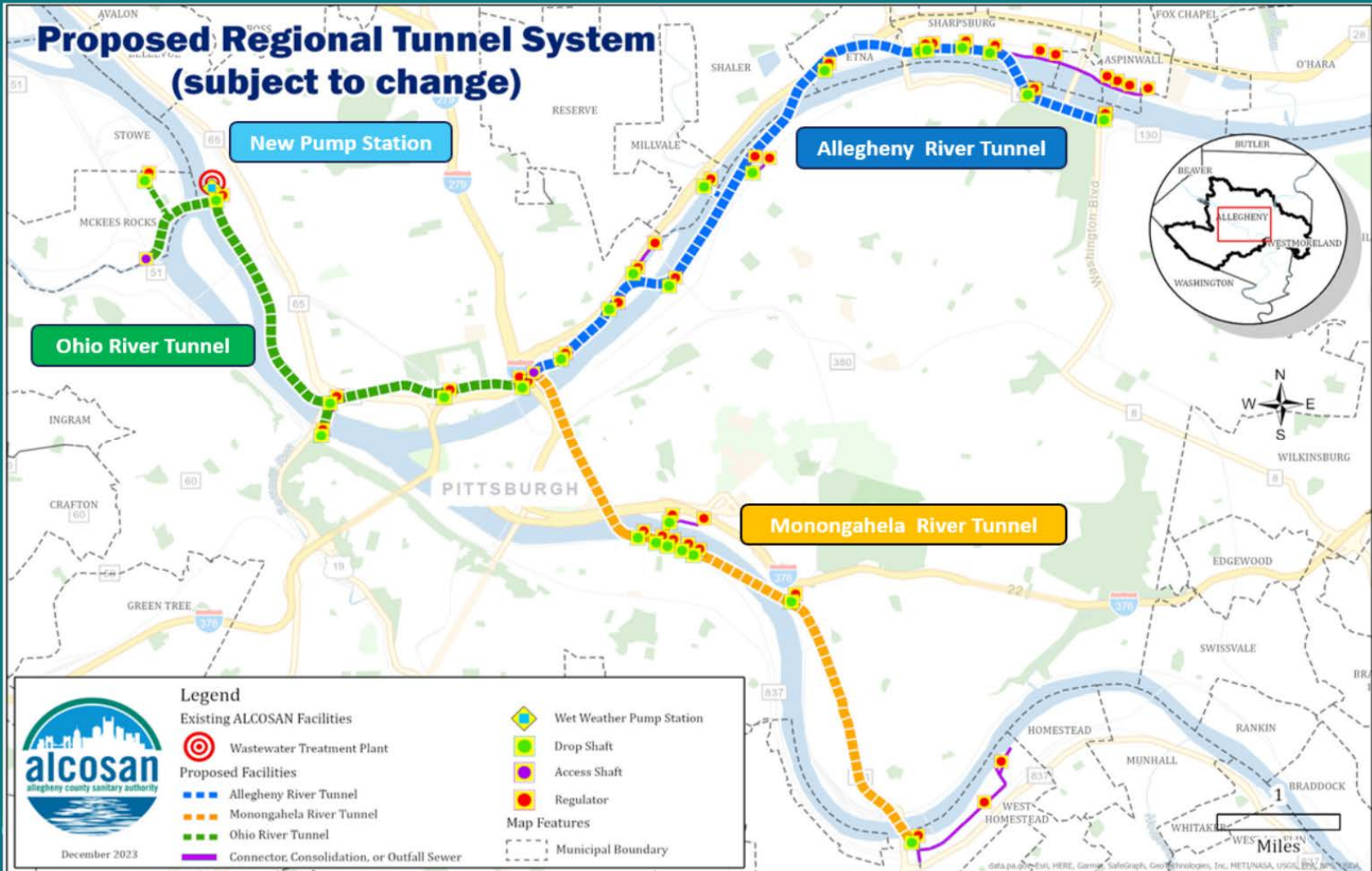


Additional Clean Water Plan Projects Forecast (*post-2024*)

- Wet Weather Pump Station – Construction Beginning 6/2025
- Allegheny River Tunnel – Construction Beginning Mid-2028
- Monongahela River Tunnel – Construction Beginning Late-2030



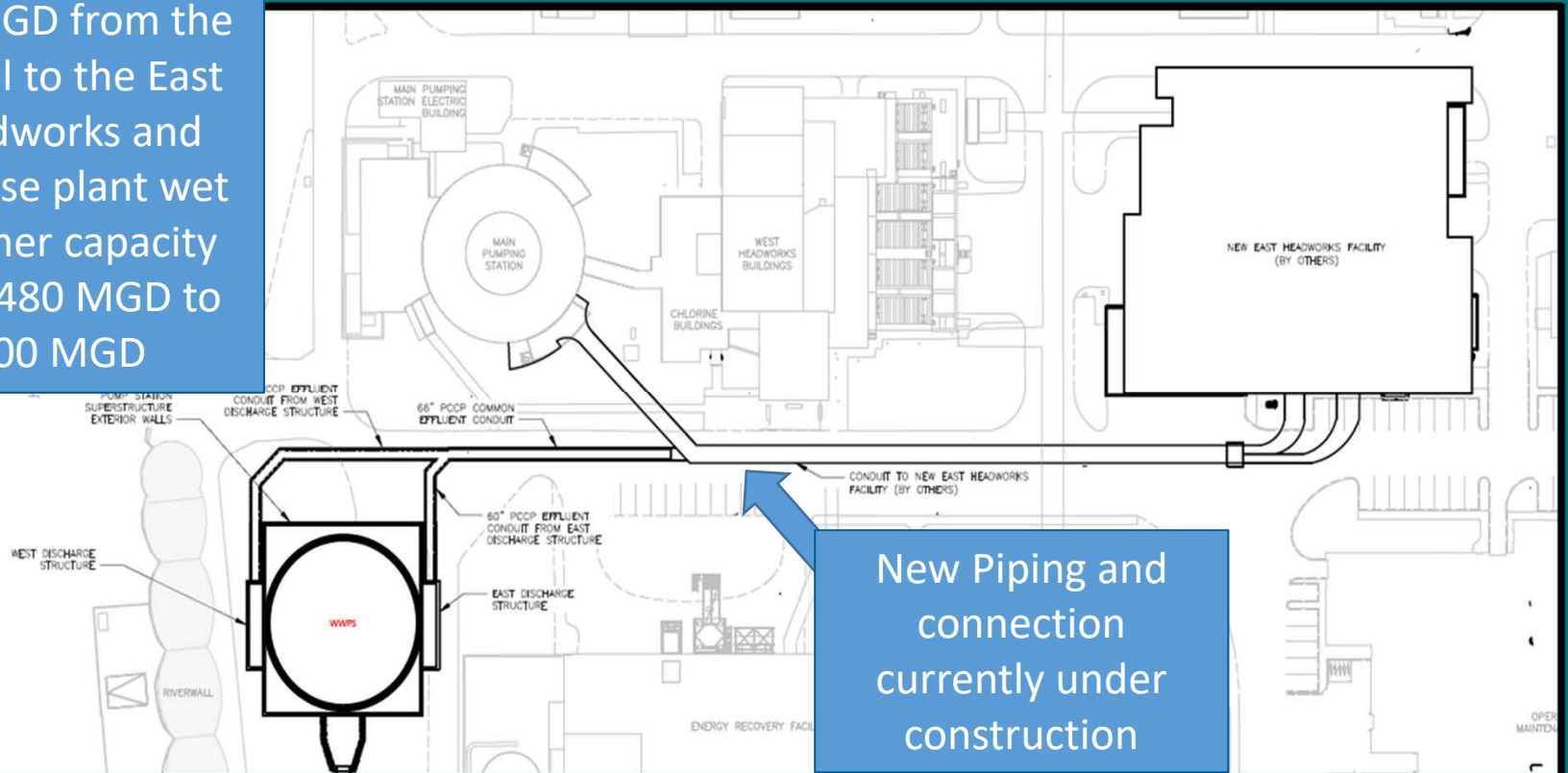
Future Tunnel Program Projects





Wet Weather Pump Station

Designed to pump 120 MGD from the tunnel to the East Headworks and increase plant wet weather capacity from 480 MGD to 600 MGD



New Piping and connection currently under construction



Wet Weather Pump Station

Single shaft and be of a single circular wet well and dry pit configuration – similar to existing Main Pump Station

- Will require support of excavation to dig a shaft 185-ft deep and 150-ft in diameter
- Will require interfacing with the ORT project
- Includes complete fit out, testing and startup of the pump station.





Check the ALCOSAN Website

The screenshot shows the ALCOSAN website's navigation menu with options: WHO WE ARE, WHAT WE DO, WORK WITH US, OUR CUSTOMERS, CLEAN WATER PLAN, EDUCATIONAL ACTIVITIES, and NEWS & EVENTS. The 'WORK WITH US' tab is selected. Below the navigation is a dark blue header with 'HOME | WORK WITH US' and the main heading 'Business Opportunities'. The main content area includes a paragraph about the importance of the company, a 'Quick Links' section with 'Vendor Registration' and 'Solicitation Process' buttons, and sections for 'How to Do Business with Us', 'Vendor Registration', and 'Planned and Active Bids'. Each section has a 'Register Now' or 'Visit Page' button.

- www.alcosan.org
 - Click WORK WITH US tab
 - Business Opportunities
 - Planned and Active Bids
- Vendor Registration: get added to list for notifications about future opportunities
- Forms and policies available



M/W/DBE Participation

- M/W/DBE goals: 10% -25% annually of all Contract dollars
- Has to be certified to be considered an MBE/WBE/DBE by ALCOSAN.
- ALCOSAN accepts certification from most county and state certifying agencies and other certifying organizations*.

*ALCOSAN does not accept self-certificaitons.



Questions / Comments?

Contact:

Shawn McWilliams

ALCOSAN

Project Engineer, Regional Conveyance

(412) 734-8053

shawn.mcwilliams@alcosan.org