



Pittsburgh Regional Transit



# PITTSBURGH REGIONAL TRANSIT



## 2024 CONSTRUCTION PROJECTS (ADVERTISEMENTS)

**Mike Sheridan, Project Engineer**

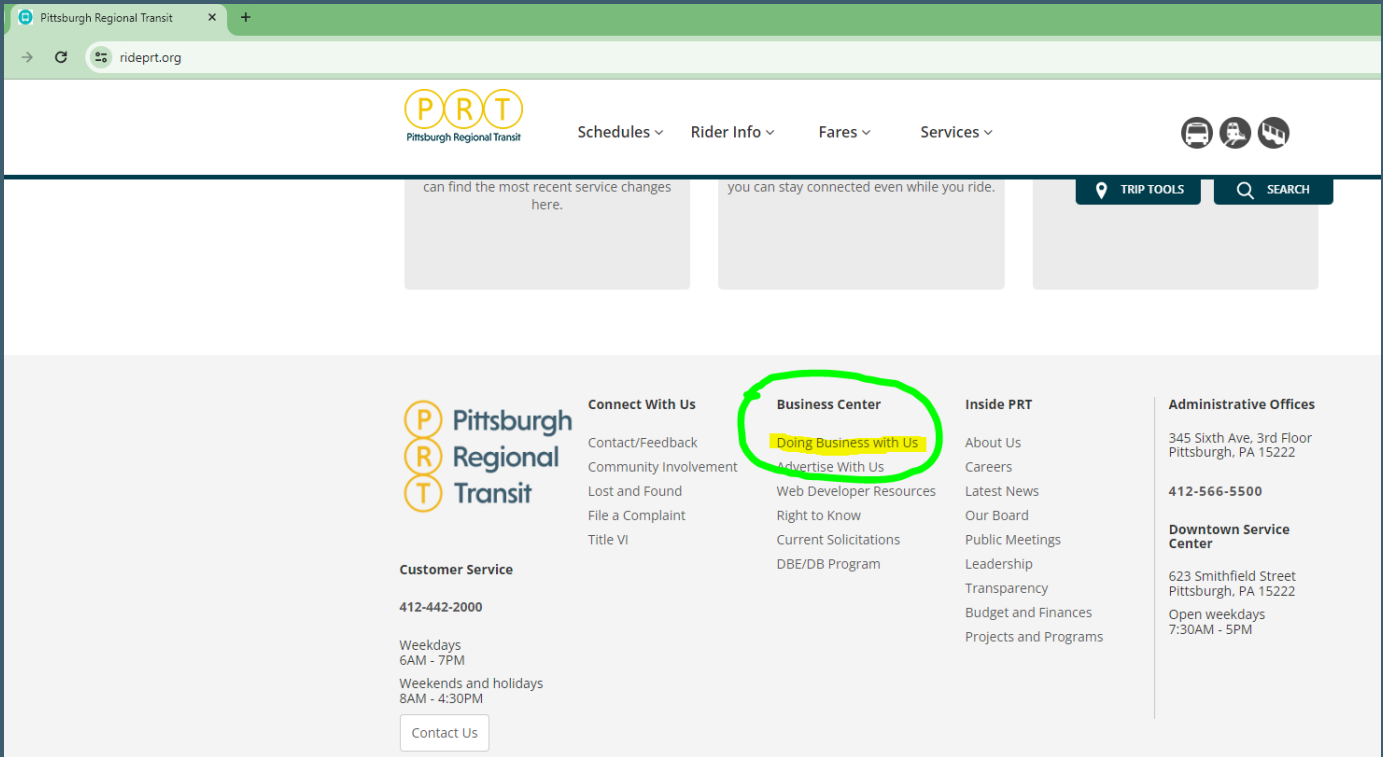
February 27, 2024



	Project	Anticipated Date of Advertisement	Cost Estimate
1	FY22 Bridge Preventative Maintenance (Two Locations)	Fall 2024	\$1.75M
2	Belasco Station Mini High Block Platform	Spring 2024	>\$3M
3	South Hills Junction Site Improvements	Summer 2024	>\$4M
4	Castle Shannon Park & Ride Improvements	Summer 2024	>\$4M
5	West Busway Bridge Preventative Maintenance	December 2024	>\$5M
6	East Busway Station State of Good Repair	Fall 2024	>\$8M
7	Ross Park & Ride Expansion	Fall 2024	>\$12M
8	Mt. Washington Tunnel Rail Replacement	Summer 2024	>\$15M
9	Bus Rapid Transit (BRT) – Phase 2 (Uptown & Oakland)	Spring 2024	>\$100M

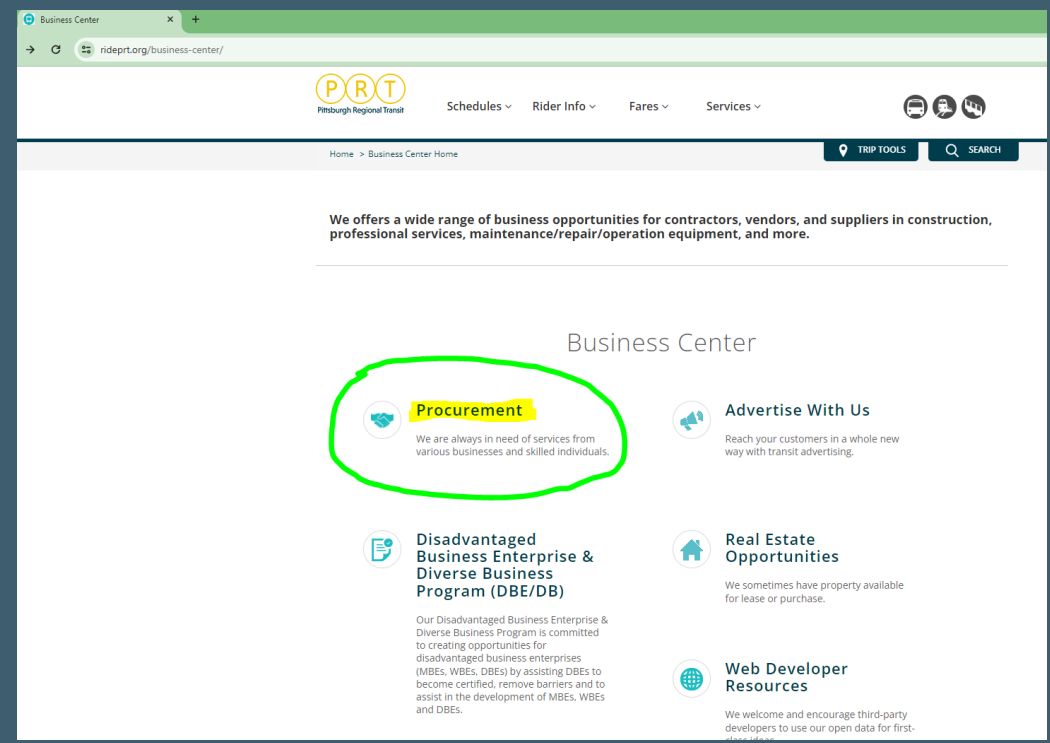
For more information go to our website: [rideprt.org](https://rideprt.org)

- Click on 'Doing Business with us'



The screenshot shows the homepage of Pittsburgh Regional Transit. The navigation menu includes Schedules, Rider Info, Fares, and Services. A 'Business Center' link is circled in green in the footer menu, with a yellow highlight on the text 'Doing Business with Us'.

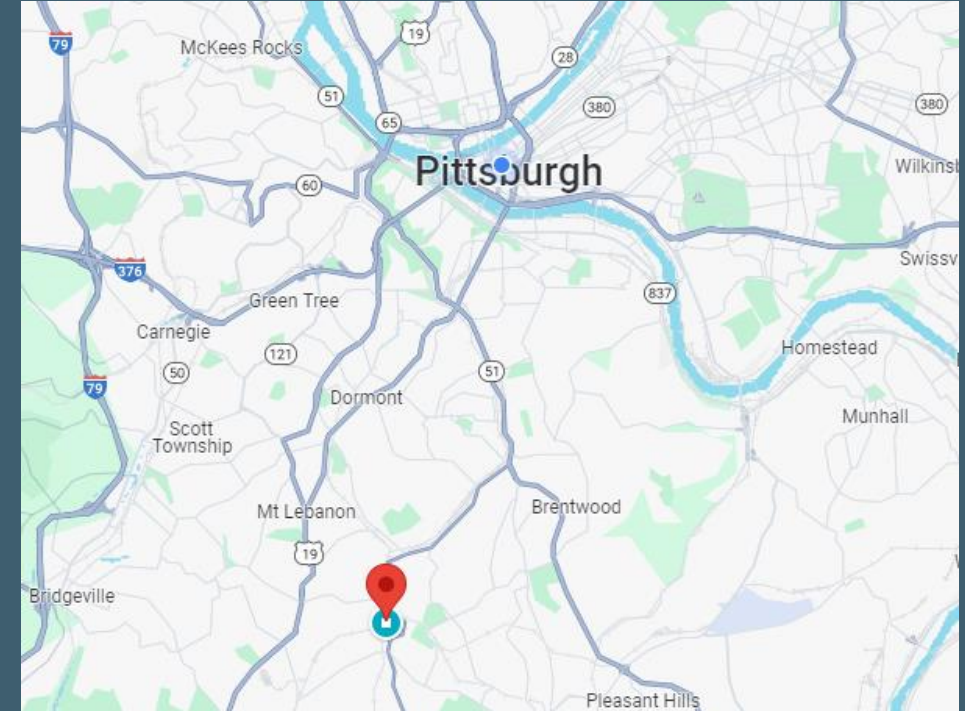
- Click on 'Procurement'



The screenshot shows the Business Center page. A 'Procurement' link is circled in green in the 'Business Center' section. The page text states: "We offers a wide range of business opportunities for contractors, vendors, and suppliers in construction, professional services, maintenance/repair/operation equipment, and more."

# 1. FY22 Bridge Preventative Maintenance (1 of 2) Mine No. 3 Bridge

- Bridge bearing replacement/refurbishment
- Concrete spall repairs
- Painting of bridge superstructure & substructure
- Vegetation removal
- Conduit repair



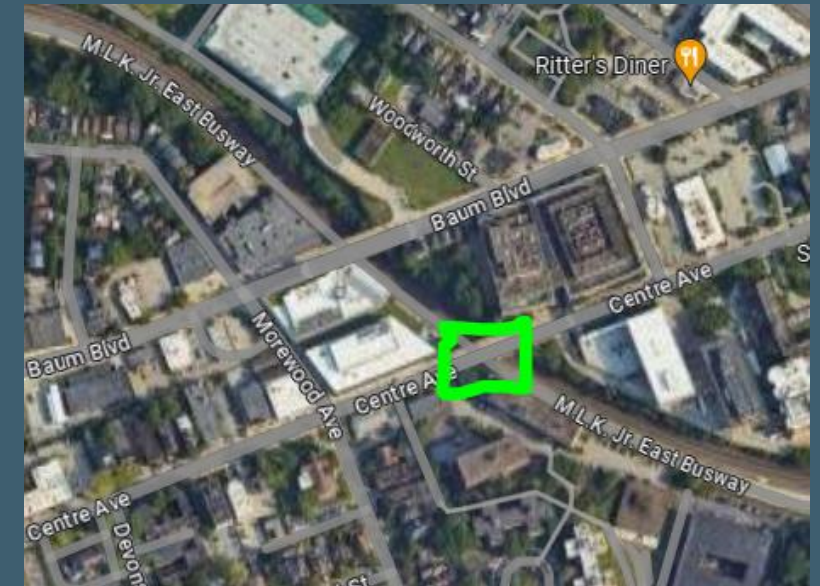
Mine No. 3 Bridge over Milford Drive, Bethel Park

**Approximate Construction Value = \$1.75M**

**Anticipate Advertising Fall 2024**

# 1. FY22 Bridge Preventative Maintenance (2 of 2) Center Ave Bridge

- Bridge bearing replacement/refurbishment
- Concrete spall repairs
- Painting of bridge superstructure & substructure
- Vegetation removal
- Conduit repair



Center Avenue Bridge over the MLK Jr East Busway, Shadyside

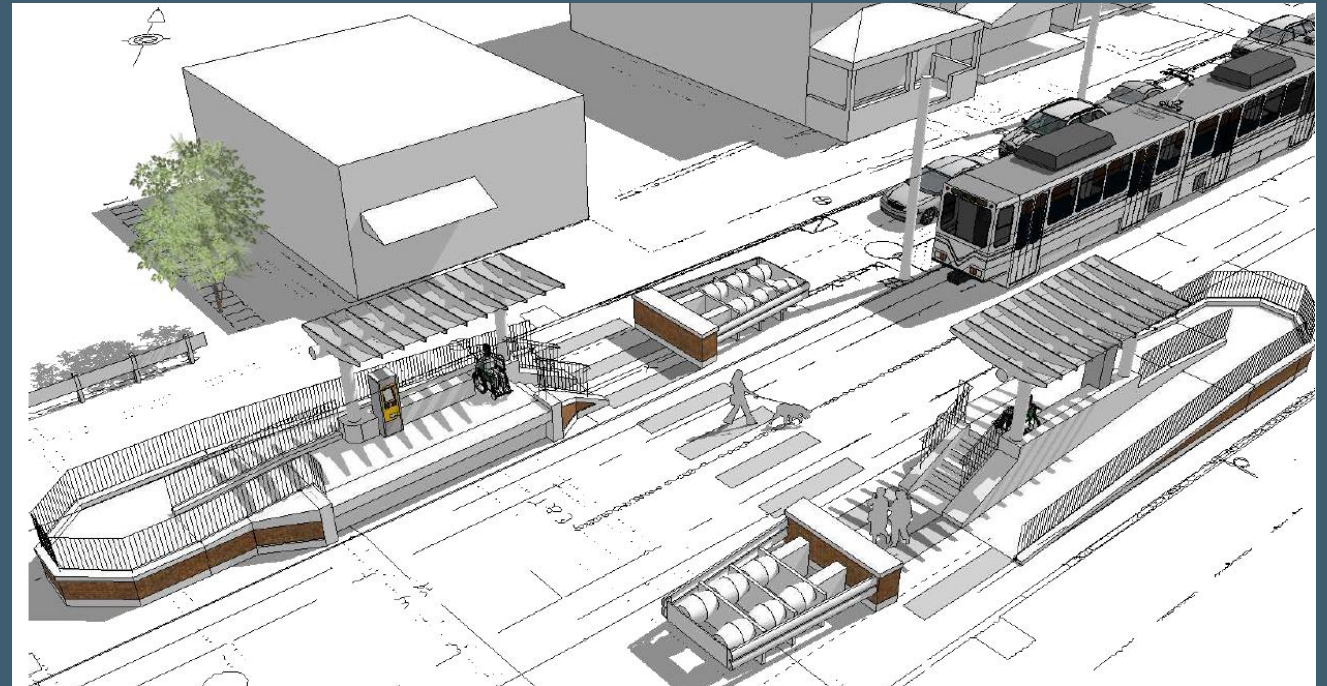
**Approximate Construction Value = \$1.75M**

**Anticipate Advertising Fall 2024**

## 2. Belasco High Platform Accessible Station



- Mini high block station
- ADA ramp and stairs
- Drilled micropile foundation
- Concrete grade beam with Architecturally finished station walls
- Steel and glass canopy and windscreen

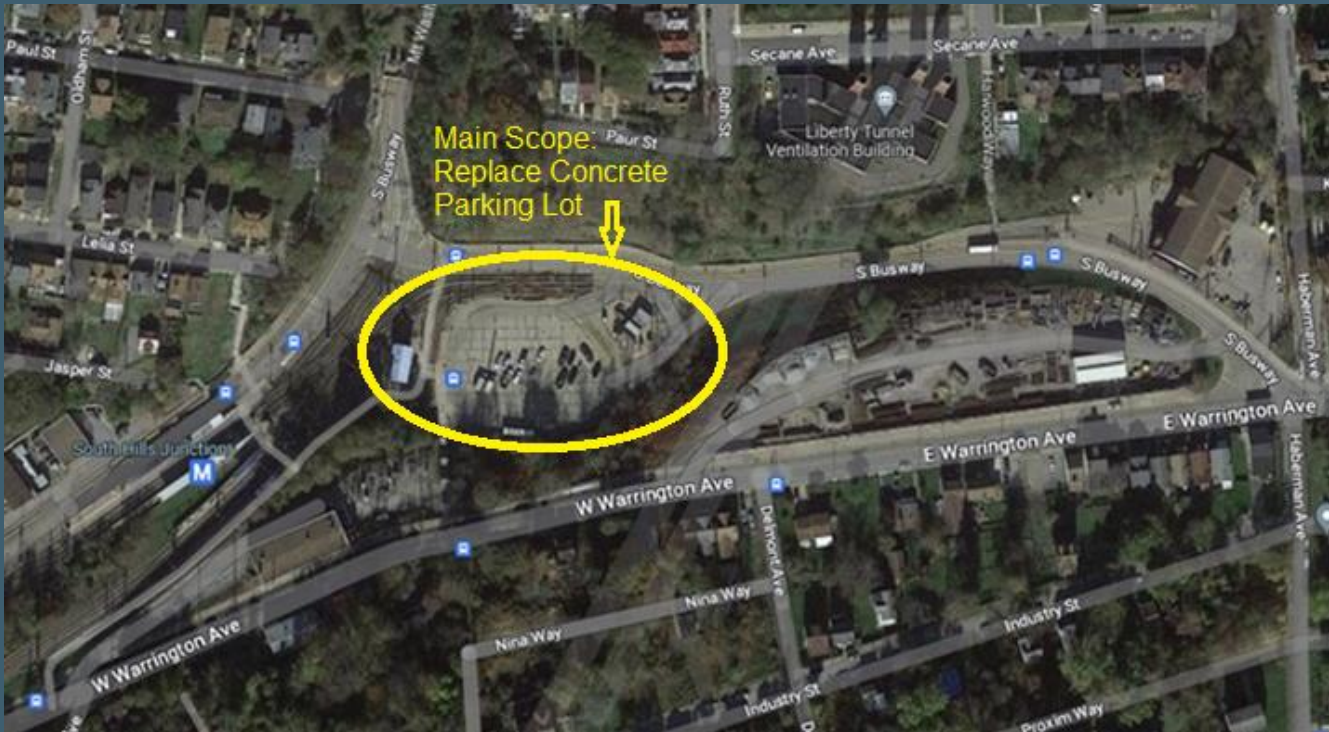


- Station lighting
- Pavement Markings & Signage
- Pavement and sidewalk restoration

**Approximate Construction Value in Excess of \$3M**

**Anticipate Advertising Spring 2024**

# 3. South Hills Junction Site Improvements



- Concrete Parking Lot Reconstruction
- Pavement Marking Improvements
- Site Drainage Restorations
- Overhead Lighting Improvements
- Curb & Sidewalk Repairs
- Retaining Wall Cleaning and Pile Painting
- Concrete Stairway Repairs
- ADA Bus Stop & Sidewalk Ramp Improvements
- Wayfinding Signage Improvements

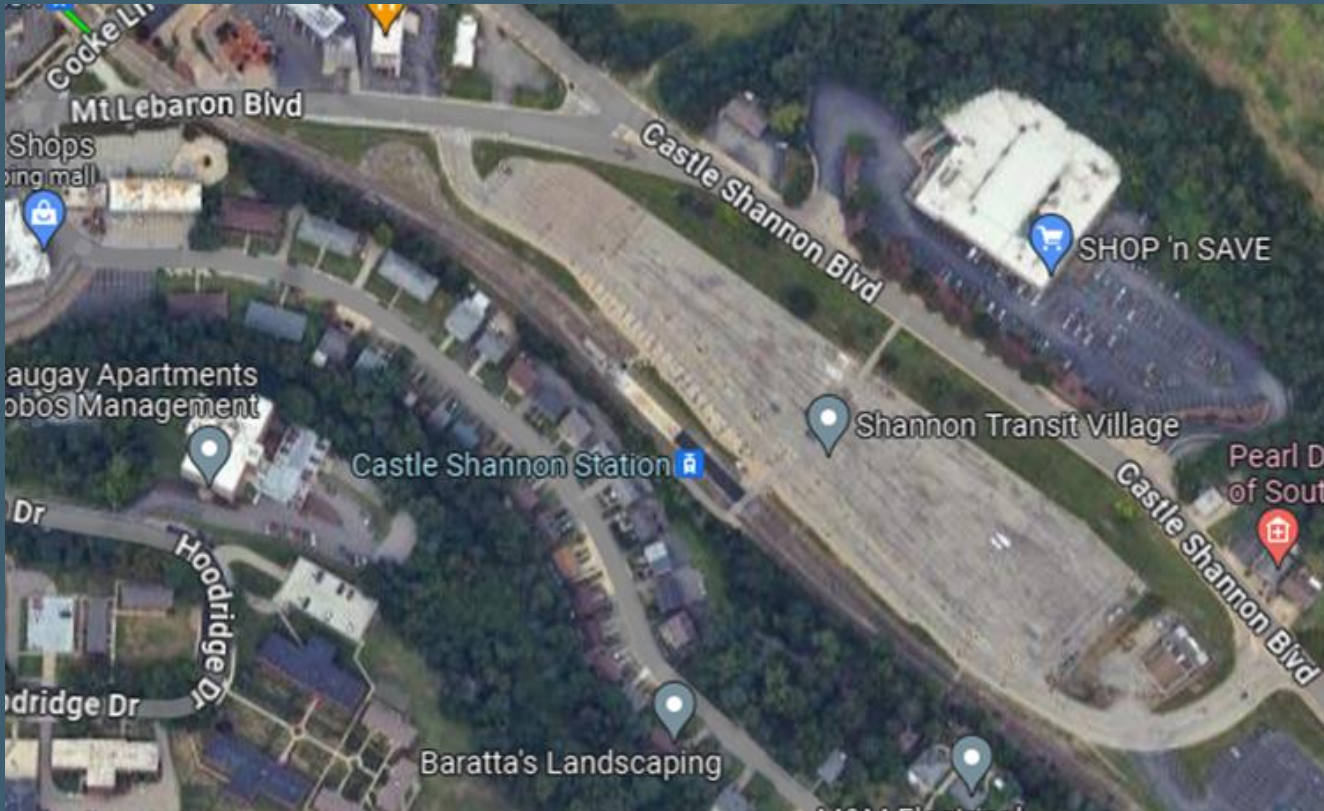
**Approximate Construction Value – \$4M**

**Anticipate Advertising Spring 2024**



# 4. Castle Shannon Park and Ride Improvements

- P** Pittsburgh
- R** Regional
- T** Transit

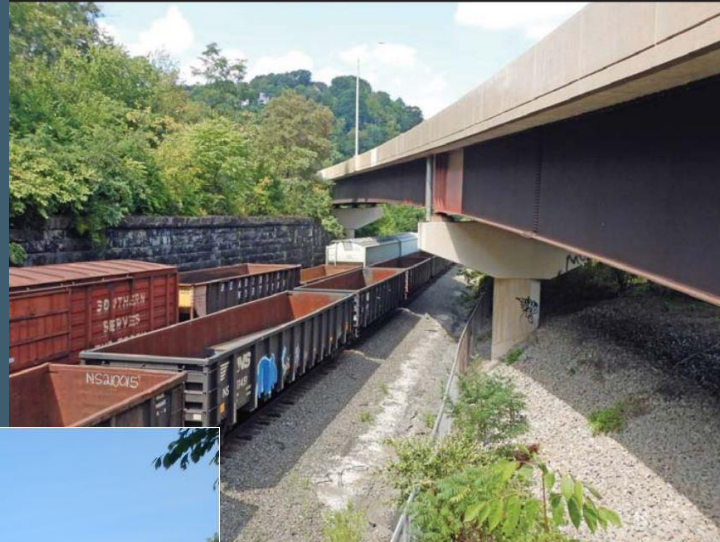


- Full depth resurfacing of asphalt parking lot
- Curb and sidewalk repairs, including along Castle Shannon Blvd
- Parking lot restriping
- LED parking lot lighting replacement and structural repairs to poles
- Replacement of parking lot signage
- Concrete staircase repair
- Repair of concrete islands

Approximate Construction Value – \$4M

Anticipate Advertising Summer 2024

# 5. West Busway Preventative Maintenance

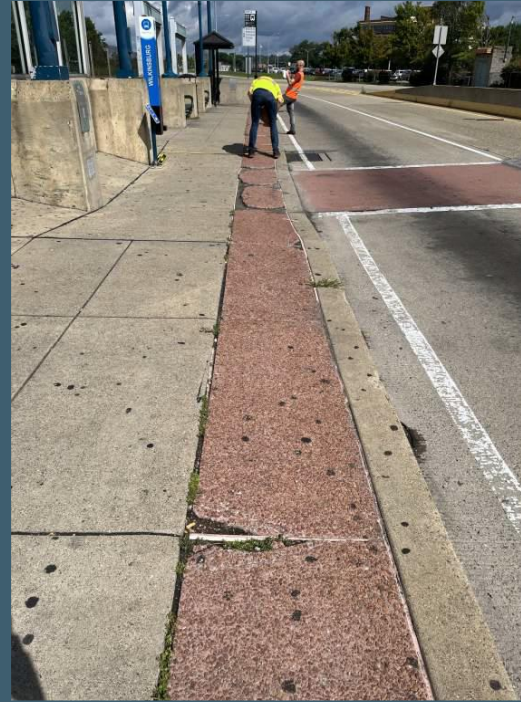
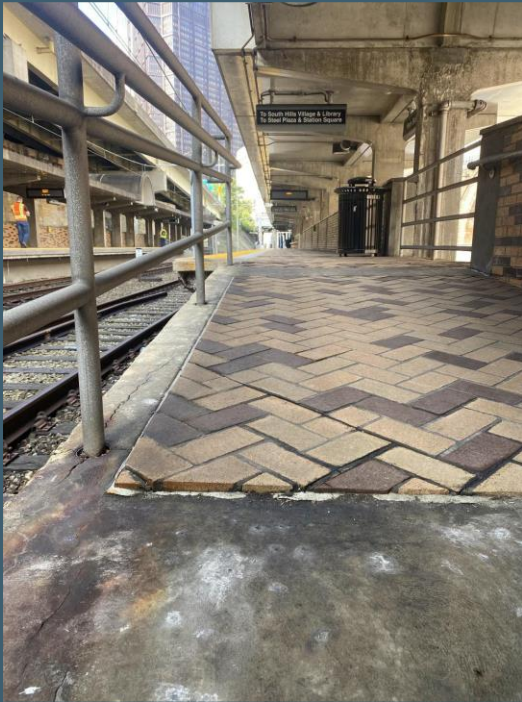


- Barrier Settlement Repairs
- Concrete spall repairs
- Masonry Abutment Repointing
- Painting of bridge superstructure & substructure
- Steel bearing repair/replacement
- Roadway repairs
- Drainage repair/cleaning

**Approximate Construction Value – \$5M**

**Anticipate Advertising Late 2024**

# 6. East Busway Station - State of Good Repair



- 9 Stations to be rehabilitated
- Concrete curb and sidewalk spall repairs
- Repair/Painting of canopies
- Signage & Wayfinding upgrades
- Lighting/power upgrades
- Railing upgrades
- Station amenities upgrades

Approximate Construction Value in Excess of \$8M

Anticipate Advertising Fall 2024

# 7. Ross Township Park and Ride Expansion

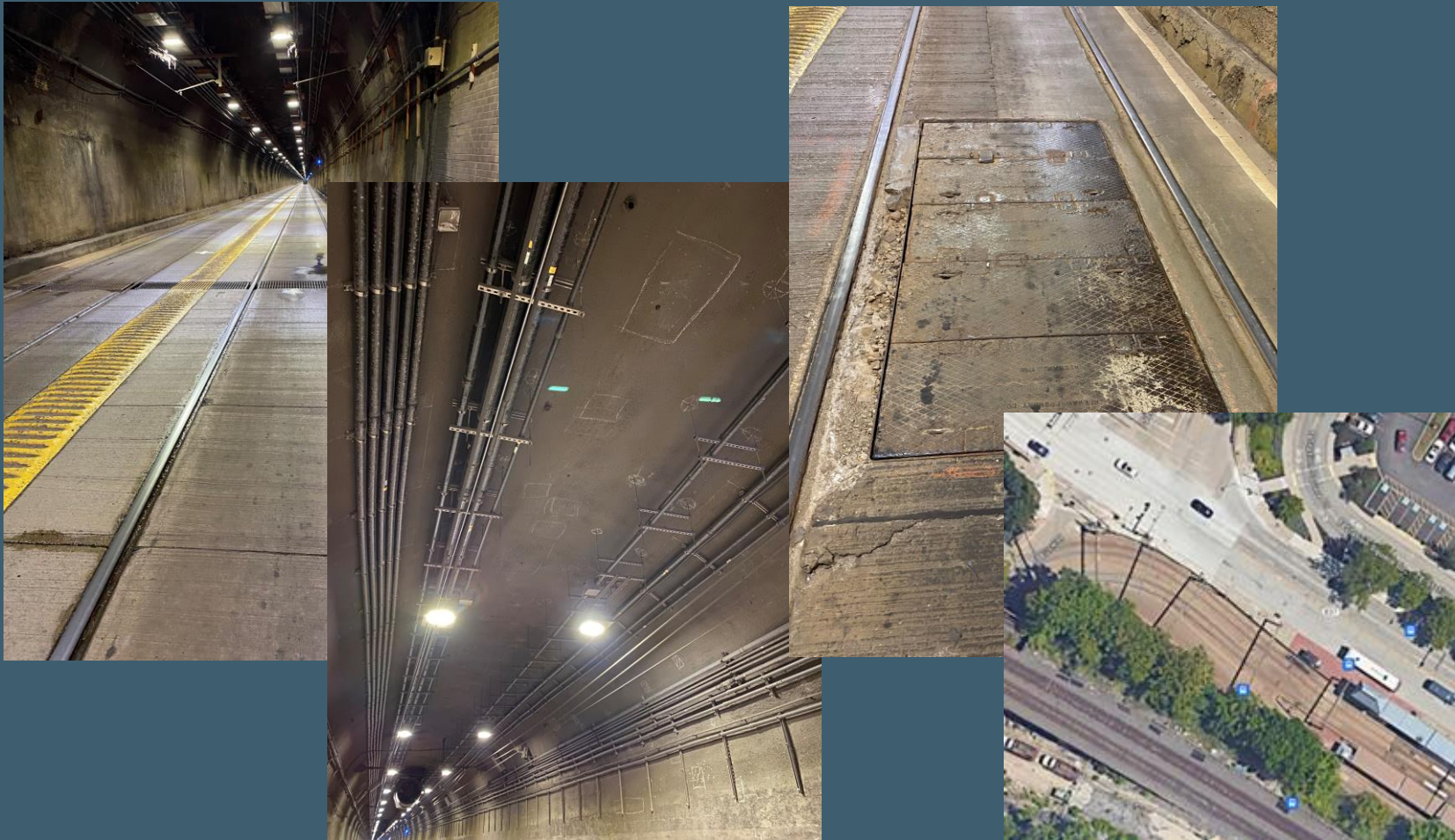


- Multi-Prime Contract - New 2-Level Precast Concrete Parking Structure
- New Site Stormwater Underground Detention System
- New Sidewalks and ADA Ramps
- New Site Lighting
- Widening of S.R. 19 to Include Turning Lanes and Bus Turnaround

**Approximate Construction Value In Excess of \$12M**

**Anticipate Advertising Fall 2024**

# 8. Mount Washington Tunnel Rail and Pavement Replacement

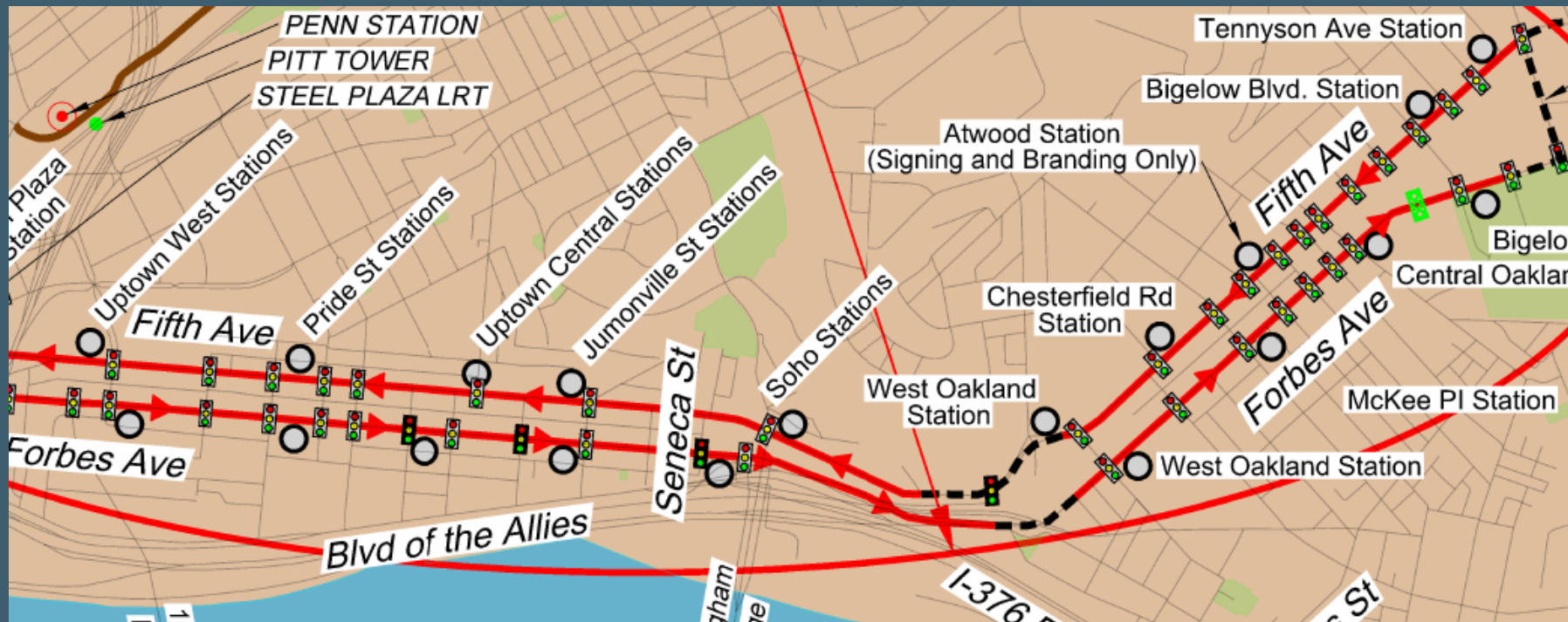


- Complete rail replacement, to Station Square Platform
- Full depth roadway replacement
- Drainage improvements
- OCS contact wire replacement
- Coordination with Duquesne Light Manhole replacement for UG duct bank

Approximate Construction Value in Excess of \$15M

Anticipate Advertising Summer 2024

# 9. Bus Rapid Transit (BRT) Project Phase 2 (Uptown & Oakland)



- Over 4.5 miles of new transit-only lanes
- Over 3 miles of curb-protected 2-way cycle track
- Signal upgrades and replacements (TSP equipped)

Approximate Construction Value in Excess of \$100M

Anticipate Advertising Spring 2024

# 9. Bus Rapid Transit (BRT) Project Phase 2 (Uptown & Oakland)



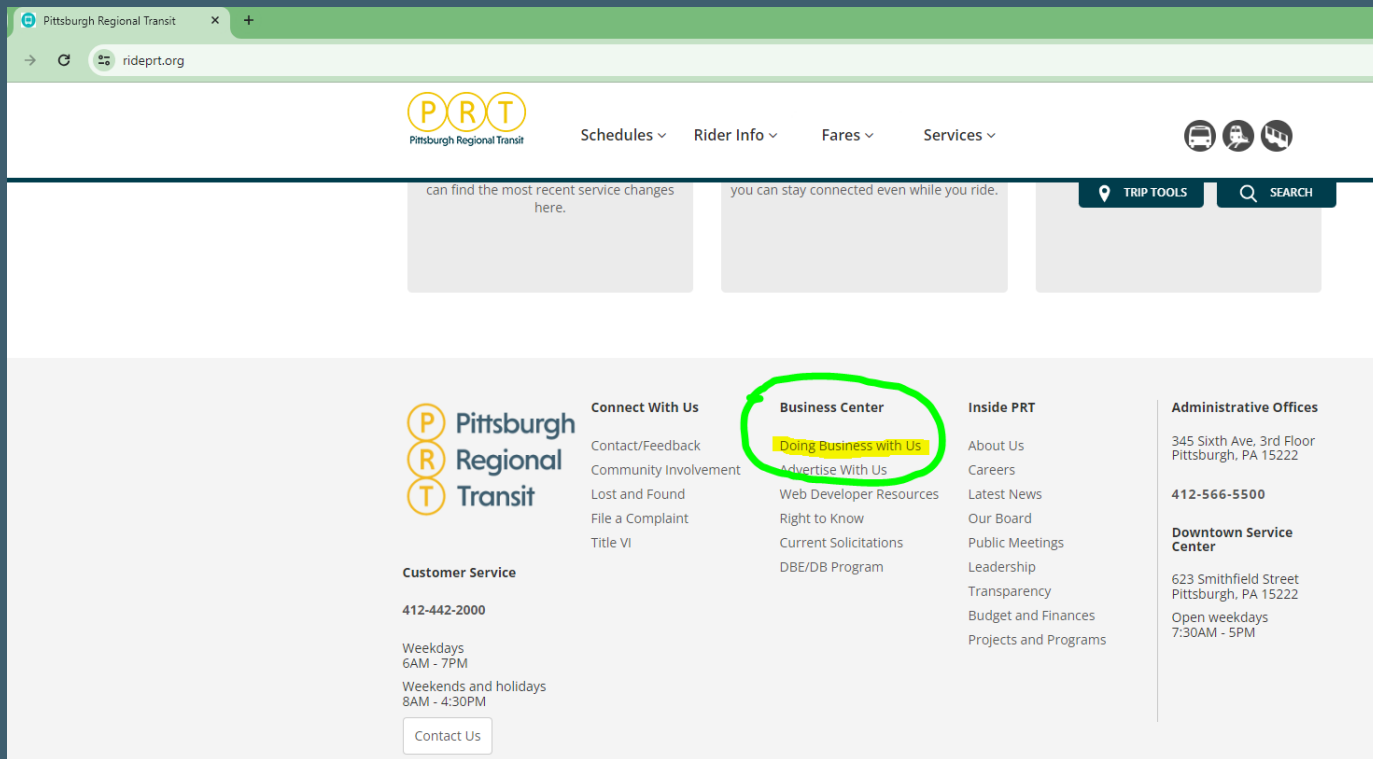
- Sidewalk Reconstruction
- Landscaping and ADA ramps
- Repair/Mill & Overlay of Road Surface
- Pavement Markings & Signage
- 18 New Transit Stations

**Approximate Construction Value in Excess of \$100M**

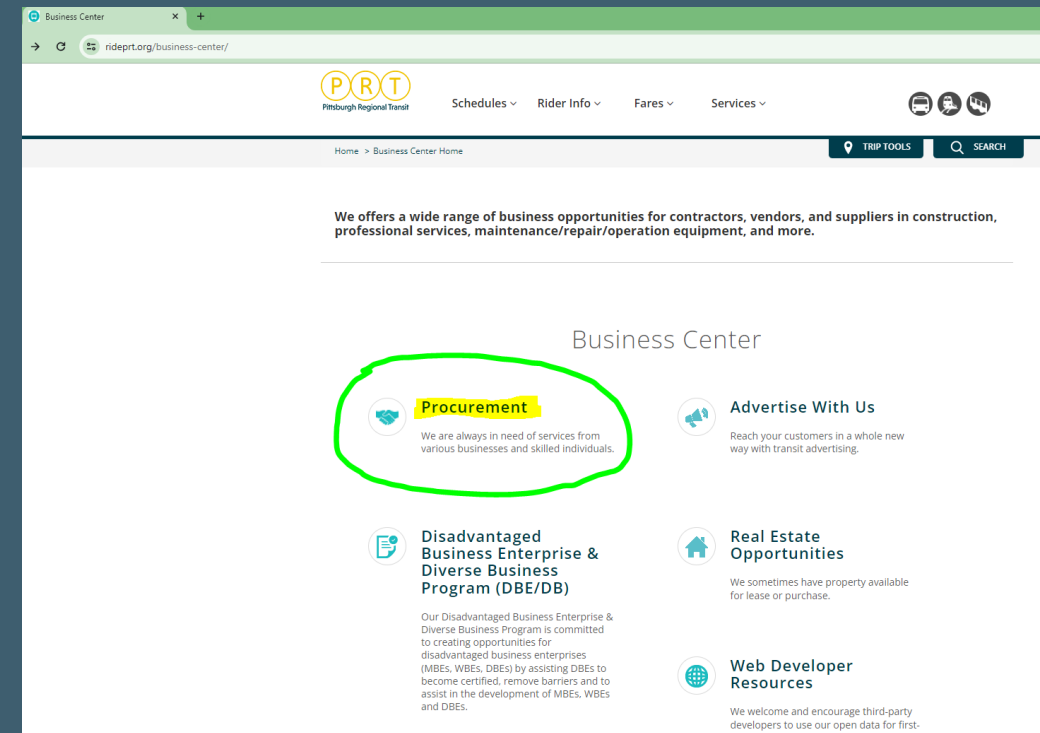
**Anticipate Advertising Spring 2024**

For more information go to our website: [rideprt.org](https://rideprt.org)

- Click on 'Doing Business with us'



- Click on 'Procurement'







Pittsburgh Regional Transit

